



*Sponsored by:
The University Honors Program
at The University of New Mexico*

[illegible]



Welcome Conference Attendees

On behalf of the University of New Mexico Honors Program, I would like to welcome you to the 39th Annual Conference of the Western Regional Honors Council. Our theme this year is "Between Earth and Sky: Imagining the Future," a fitting theme for an Honors conference and for the location. New Mexico is the Land of Enchantment with vast geographical openness and blue skies that reach into distant horizons. Honors Programs and Colleges promote imagination and initiative. They are places and spaces wherein students and faculty can examine, experiment, and explore.

During the conference, you will enjoy oral presentations and posters that highlight stimulating and thought-provoking research and creative projects of the participants. The presentations range from "Nuts and Bolts" sessions to interesting projects and activities undertaken by over thirty participating honors programs, colleges, students, administrators, and faculty. The poster presentations will take place on Saturday morning from 8:30-11:30 a.m. in the North Atrium. They will be judged and 1st, 2nd, and 3rd place winners will be announced at the Luncheon on Saturday.

The Thursday evening Welcome Reception will begin at 7:00 p.m. in the Franciscan Ballroom. There will be performances by Native American dancers and Mariachis. The breakfast on Friday morning will include a welcome by Dr. Chaouki Abdallah, UNM Provost, and a brief address by Dr. Michael Dougher, Senior Associate Provost, Dr. Ursula Shepherd, a 2011-12 CASE/Carnegie U.S. Professor of the Year and full-time faculty in Honors. The *Scribendi* reception will take place on Friday evening at 7:00 p.m. Our conference will conclude with a Saturday luncheon including our keynote speaker, William deBuys, whose talk is entitled, "The World is Changing. Our Job is Not."

I would like to thank the UNM Honors Program staff, Lee Clark and Sophia Alvarez for their efforts to make this an enjoyable and rewarding experience for our guests. Thanks also to Jona Kottler, Chloë Winegar-Garrett, Shari Taylor, Danielle Gilliam, and UNM Honors students who have volunteered to help with a number of conference minutiae. Thanks to Kim Andersen (Washington State University), Sarah Feldstein-Ewing (University of New Mexico), Gary Larsen (University of Alaska), John MacLean (Southern Utah University), and Ursula Shepherd (University of New Mexico), for agreeing to serve as judges for the poster session.

We hope you enjoy your time in Albuquerque!



Rosalie C. Otero, UNM Honors Program Director and Conference Chair



Table of Contents

Welcome from the UNM Honors Director	Page 3
General Information	Page 5
Registration/Information Desk	
Conference Badges	
Audio-Visual Equipment	
Message Bulletin Board	
Conference Evaluation	
Hotel Information	
Old Town Albuquerque Map	Page 6
Conference Map	Page 7
Conference Schedule	Page 8
Walking Tour of UNM Campus	Page 11
Welcome Reception	Page 12
Opening Session and Breakfast.....	Page 13
Scribendi Reception	Page 13
Poster Presentation Information	Page 13
Keynote Speaker.....	Page 14
Oral Presentation Descriptions	Page 15
Poster Presentation Descriptions	Page 24
Participating Institutions	Page 28
Index of Speakers and Presenters	Page 29



General Information

Registration/Information Desk

Thursday, April 12 3:00 p.m.-7:00 p.m.
Friday, April 13 7:00 a.m.-5:30 p.m.
Saturday, April 14 8:00 a.m.-12:00 p.m.

Conference Badges

Conference attendees must wear their official conference badges to be admitted to conference events, including all meals, all sessions, the Welcome Reception, and Closing Luncheon. There will be a \$50 fee for replacement badges.

Audio-Visual Equipment Policy

If you are making a presentation, we ask that you not use any AV or computer equipment that has not been approved by the conference organizers. If you have not been authorized to use AV equipment for your presentation, please do not ask the Hotel Albuquerque staff to hook up or plug in any unauthorized AV equipment. Be aware that the conference organizers takes no responsibility for unauthorized or unapproved AV charges. The conference organizers will turn all such charges over to the presenter for full and prompt payment.

Message Bulletin Board

A message bulletin board will be located in the registration area. This will be utilized for all conference updates and available for posting of messages by any conference attendee.

Conference Evaluation

Please make sure to complete the conference evaluation which is on the WRHC 2012 website: <https://sites.google.com/site/wrhc2012/>.

Hotel Albuquerque at Old Town

800 Rio Grande Blvd. NW
Albuquerque, New Mexico 87104
Phone: 505-843-6300
Fax: 505-842-8426
Website: <http://www.hotelabq.com/>

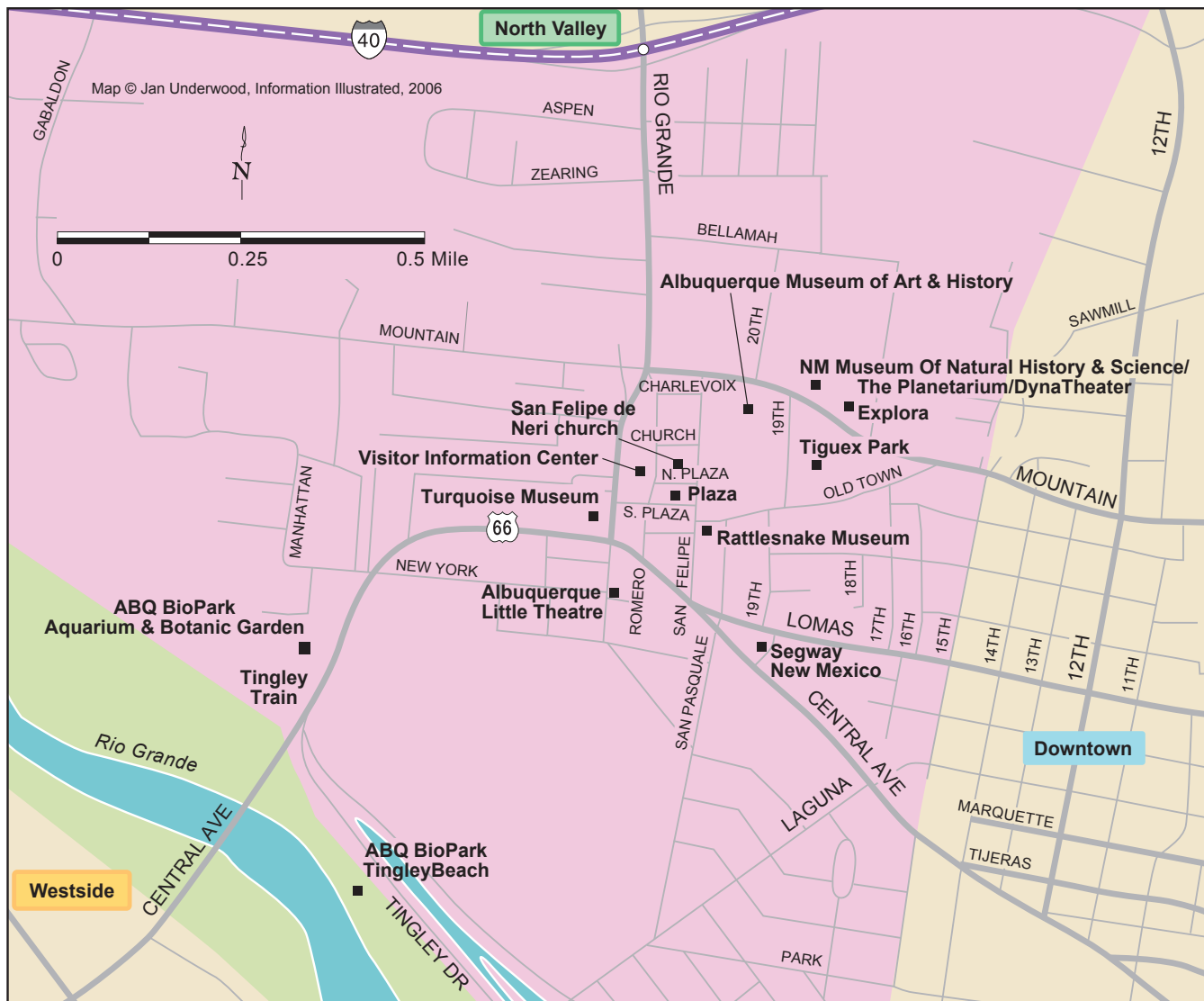
With a 400-year old plaza, located at the center of more than 200 specialty shops showcasing authentic native jewelry, restaurants, art galleries, museums, and cultural events to explore and enjoy, the historic Hotel Albuquerque offers WRHC Conference guests with the rich cultural experience unique to New Mexico!

Offering 188 recently upgraded guest rooms including 20 suites, and outdoor pool and jacuzzi as well as two delightful restaurants, Café Plazuela a casual and festive dining atmosphere and Cristobals, an intimate fine dining experience.

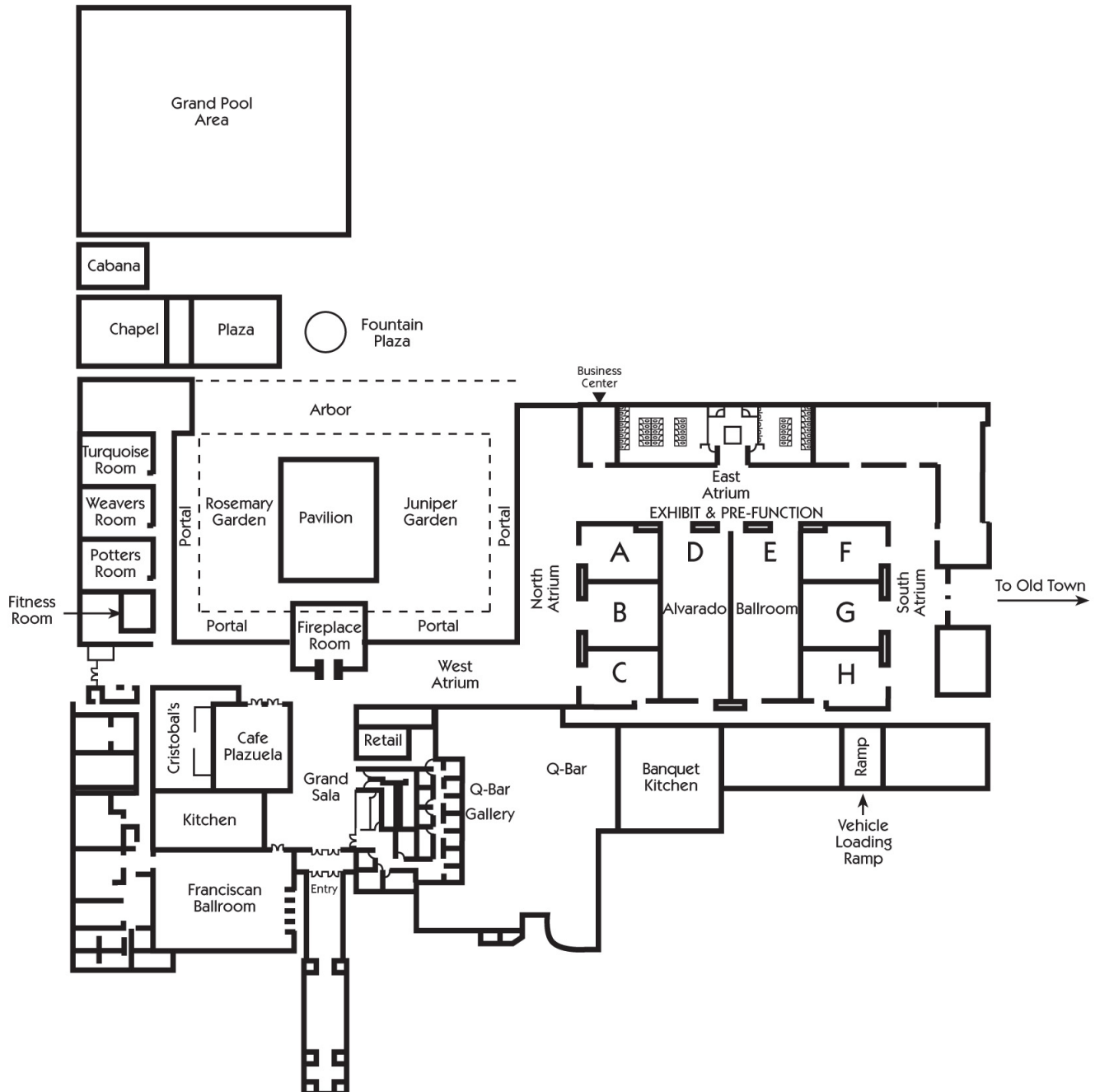
Rooms include:

- Two double beds (king beds available)
- Seating & dining area
- In-room gourmet coffee & tea
- Private bath with tub and shower
- Room Service
- Balcony
- Complimentary high-speed WiFi
- Cable/satellite TV/In-room movies
- Iron/ironing board
- Hair dryer

Old Town Albuquerque Map



Conference Map



Conference Schedule

Thursday, April 12, 2012

3:00 p.m.- 7:00 p.m.	Registration/Information Desk (North Atrium)
3:30 p.m.- 5:00 p.m.	Lobo Public Art, Monuments and Memorials: A Walking Tour of the University of New Mexico Campus (UNM Bookstore)
5:00 p.m.- 7:00 p.m.	Dinner (on your own)
7:00 p.m.- 9:00 p.m.	Welcome Reception with Cultural Entertainment (Franciscan Room)

Friday, April 13, 2012

7:00 a.m.- 5:00 p.m.	Registration/Information Desk (North Atrium)						
8:00 a.m.- 9:30 a.m.	Opening Session and Breakfast (Room E) Dr. Chaouki Abdullah, UNM Provost Dr. Michael Dougher, UNM Sr. Associate Provost Dr. Ursula Shepherd, U.S. Professor of the Year						
10:00 a.m.- 4:30 p.m.	Galeria de <i>Scribendi</i> (Fireplace Room)						
	A	B	C	D	F	G	H
10:00 a.m.- 11:00 a.m.	Cultural Competence and its Importance in an Honors Program	The Future of the Internet	From Small Town Scholars to World Class Leaders: Establishing an Active Community in an Honors Freshman Seminar	Dissent and Democracy: A Freshman Seminar	Having a Blast with Honors	Living with Harry Potter: Recreating Hogwarts through Study Abroad	An Experiment in Integrated Learning: Baseball in American Life and Culture
11:15 a.m.- 11:45 a.m.	An Argument Against Emotionism	OPEN	Scandinavian Crime: Echoes of the Past, Visions of the Future?	Arbuscular Mycorrhizal Fungi and Sunflower Symbiosis	Science, Democracy, and the Future: Importance of a Scientifically Literate Citizenry	The Intersection of Mathematics and Communication Studies	Edgar Degas: The Practice and Process of Painting
11:45 a.m.- 2:00 p.m.	Lunch (on your own)						



Conference Schedule

Friday, April 13, 2012 *continued...*

	A	B	C	D	F	G	H
2:00 p.m.- 2:30 p.m.	A Wander in the Desert Turns to Wonder	OPEN	Hinduism: One Religion, One Billion Followers, 330 Million Gods	Cultural Expectations of Masculinity	Unfolding a Thesis	Hard Times in the Big Easy: The Yellow Fever Epidemic of 1853	Teaching to Learn
2:45 p.m.- 3:15 p.m.	New Legacy: A Fresh Start on an Ancient Planet	Where Words Fail, Music Speaks: the Experience of Adapting	Our Energy Future Starts Today: One Person/One Family Making a Difference	The Road to Gettysburg	Colony Collapse Disorder in Honeybees	Occupy Wall Street or Tea Party Rally: Where would Jesus be in Contemporary American Politics?	Reaching Out from the Ivory Tower: How to Form an Effective External Advisory
3:30 p.m.- 4:00 p.m.	Zombies, Bad Robots	The Great Usurper: On Moral Nihilism's Threat to America	Private Correctional Facilities: Do They Make Us Safer, or are They Simply the Capitalist's Dream?	Organized Crime and its Effects	Physiological Arousal and Adolescent Aggression	Thinking Outside the Box: Designing Collaborative Learning Projects	Three Views of a Woman: Using Hatshepsut as a Lens Through Which to Examine Gender
4:15 p.m.- 4:45 p.m.	Star Trek: Adventures Through Space and Equality	OPEN	Foreign Aid: A Helpful or Harmful Practice	Space: The Final Frontier	The Effect of a Primed Social Goal on Social Prospective Memory	It Started with a Mouse but Ended with a Sequel: How Disney "Fights Back" in a Plummeting Economy	The Myths of Baseball's Past, and Predictions for the Future
5:00 p.m.- 5:30 p.m.	Capturing the Raven: The Process of Composing and Recording a Film	Turning Oppression into Success: How the English Restoration Actress Achieved Poetic Justice	A Comparison of Ancient and Modern Tattoo Significance	OPEN	Aphrodite, Hera, and Athena: Goddesses as Women in Art	Recruiting the Future	OPEN
5:30 p.m.- 7:00 p.m.	Dinner (on your own)						
7:00 p.m.- 9:00 p.m.	Scribendi Reception (Franciscan Room)						



Conference Schedule

Saturday, April 14, 2012

7:30 a.m.- 8:30 a.m.	Breakfast (Room D)							
8:00 a.m.- 12:00 p.m.	Registration/Information Desk (North Atrium)							
8:00 a.m.- 9:00 a.m.	WRHC Business Meeting (Room C)							
8:30 a.m.- 11:30 a.m.	Poster Presentations (North Atrium)							
8:30 a.m.- 9:00 a.m.	Fireplace	A	B	C	D	F	G	H
	The Culture of Death in the Western World	Never too Old: Reading Aloud to Secondary Students Has a Positive Effect	Speaking Through Color: How Color Choices in Artwork Enhance Ability of a Piece to Communicate to Viewer	UNAVAILABLE	OPEN	The Role of the United Nations: A Case Study of Palestine	IS-LM and its Alternatives' Implications on Monetary Policy	Shh...I am Eavesdropping on our Future
9:15 a.m.- 10:15 a.m.	Conexiones UNM: Using Ethnographic Methods with Undergraduate Students in International Programs	Service Learning Action Research	Risking Failure: Developing Resiliency as a Core Value in Honors	Mobile Game Design in Honors	OPEN	Imagining <i>Scribendi's</i> Future: Possibilities Beyond the Stars in the Western Region	"La Llorona" Influences in the Community	Solution to the Obscene: A Discussion on Solving
10:30 a.m.- 11:00 a.m.	Domestic Violence and the Healing Church	Not Just an Event	Reconsidering the Characteristic of Strength in the Gothic Romance	Heroisim, Hardships, and Hallelujahs	UNAVAILABLE	OPEN	Discovering the Weird: The Influence of an Unknown Gene	Northern AZ G.U.R.U.S.: Improving the First Year Experience
11:15 a.m.- 11:45 a.m.	"War: An Abomination by Man, or an Illness?" An Existential Analysis of Les Chemins de la Liberte	Trichloroethylene, the Silent Massacre Part II: Creating a Bill	OPEN	The Tenacity of Creation in Semi-Autobiography		OPEN	The Adobe Project: Experiential Learning One Brick at a Time	OPEN
12:00 p.m.- 2:00 p.m.	Closing Luncheon with Keynote Speaker (Room D)							





Lobo Public Art, Monuments and Memorials: A Walking Tour of The University of New Mexico Campus

Thursday, April 12, 2012 3:30-5:00 p.m.

(Meet at UNM Bookstore)

Public art, monuments and memorials are conscious attempts to define communities, demarcate space, set identities, and shape people's perceptions. They are constructed for the long term persistence of both objects and ideas. The City of Albuquerque has one America's oldest and largest collections of public art and the University of New Mexico is a vibrant part of that program. The campus is home to well-known, up-front works by world renowned artists as well as quiet pieces tucked away in near-forgotten corners. This walking tour will explore the history of the university, the state, and the city and consider various attempts to define what it means to be a Lobo. It will examine how public space functions, how public art works and how pieces have both succeed and failed in shaping the campus and its people.

The tour will last approximately 1 ½ hours and all participants should be prepared to walk at least a mile. The tour is free, but space on this tour is limited. The walk begins at the Central Avenue and Stanford Drive entrance to the University of New Mexico campus, next to the UNM Bookstore. This is approximately 4 miles from the Hotel Albuquerque and you must provide your own transportation to the site.

About Your Tour Guide

Troy Lovata, Ph.D. is an Associate Professor in the University Honors Program at the University of New Mexico. He is an Archaeologist and Anthropologist who specializes in the study of Public Space, the ways in which people use the past as currency in the present, and the connections between ancient monuments and modern public art. He previously served as the Chair of the Albuquerque Arts Board; the entity that oversees, selects, and maintains more than 500 pieces of public art, monuments and memorials in the Duke City.

Directions from Hotel Albuquerque

By Bus (20-30 minutes each way)

- Walk south for 4/10ths of a mile on Rio Grande Blvd, past Old Town Plaza, to the corner of Rio Grande and Central Ave. The bus stop is located on the Southeast corner of the intersection, next to the police substation. Take the **Rapid Ride Red Line (#766)** or **Green Line (#777)** Eastbound. The Rapid Ride is an express bus that runs every 10 to 20 minutes. Cost is \$1 for a single ride or \$2 for an unlimited day pass. More information and full bus schedules can be found at <http://www.cabq.gov/transit>. Get off at the **fourth** stop, the UNM/Frontier Restaurant stop. If you arrive early, enjoy the cinnamon rolls, green chili and art at this longstanding campus institution.
- Cross the street (intersection of Central and Cornell) and enter UNM through the pedestrian entrance, under the arch. We will meet here, next to the UNM Bookstore.
- Return to the hotel in reverse, except catch the bus at the UNM stop the Northwest corner of Central and Yale (1 block West of the UNM/Frontier stop).

By Car (10-15 minutes each way)

- Head South on Rio Grande Blvd, past Old Town Plaza, 4/10ths of a mile to Central Ave. Turn Left/East on Central Ave. Stay on Central through the traffic circle, past Downtown, under the railroad trestle, and past Interstate 25 until you see UNM (approximately 3 miles from Rio Grande and Central).
- Continue Eastbound on Central to Stanford Dr. (approximately from 3½ miles from Rio Grande and Central). There is a traffic light at this intersection.
- Turn Left/North on Stanford and enter campus.
- Turn Right/East on Redondo (at the "T" intersection).
- Park either at the lot immediately on your Right or turn Left to enter the parking garage. You must pay for parking at either location.
- Walk 1 block West on Redondo to the meeting place: the UNM Bookstore, next to the arch at the pedestrian entrance to campus.



Welcome Reception

Thursday, April 12, 2012 7:00-9:00 p.m.
(Franciscan Room)

Meet other conference attendees from the western region while experiencing the Native American Community Academy (NACA) Drum and Dance Troupe and Mariachi Tradicional.

NACA Drum and Dance Troupe

The newly formed NACA Drum and Dance Troupe performs during the school year at a variety of locations including the Indian Pueblo Cultural Center and area community pow-wows. The entire group is comprised of 30 middle/high school students and 2 advisors, Duta Flying Earth and Marc Martin-Keka. Over the course of the school year, the students learn about the different Native American dance styles, history of the dances, drum group songs and proper protocol of being around the drum.



Mariachi Tradicional

Mariachi Tradicional, an energetic, powerful and outgoing group came together in September 2008. This ensemble has an extensive repertoire of traditional mariachi music and give fun-filled, enthusiastic performances that are outstanding because each member brings not only a special talent to the group, but a genuine love for and commitment to his/her work.





Opening Session and Breakfast

Friday, April 13, 2012 8:00-9:30 a.m.

(Room E)

The University of New Mexico Provost, Dr. Chaouki Abdallah; the Senior Associate Provost, Dr. Michael Dougher; and Honors Program faculty member and U.S. Professor of the Year, Dr. Ursula Shepherd will deliver opening remarks.

Scribendi Reception

Friday, April 13, 2012 7:00-9:00 p.m.

(Franciscan Room)

The 26th issue of the magazine will be debuted, and students published in the magazine will speak about their work. This year's WRHC winners:

Monica Fernandez	University of California, Irvine	Nonfiction
Claire Mikeson	University of Montana-Missoula	Fiction
Alisa Boyko	San Diego Mesa College	Visual Art
Jeremy Cites	Paradise Valley Community College	Digital Art
Kendell LaRoche	Metro State College of Denver	Photography
Molly Sroges	University of New Mexico	Poetry

Poster Presentations

Saturday, April 14, 2012 8:30-11:30 a.m.

(North Atrium)

The Poster Presentations will take place in the North Atrium on Saturday, April 14, 8:30-11:30 a.m. Students may choose to present their posters in half hour increments, in other words students need not remain at their posts for the full three hours. The posters will be judged and 1st, 2nd, and 3rd prize winners will be announced at the luncheon.

Judges:

Kim Andersen (Washington State University)
Sarah Feldstein-Ewing (University of New Mexico)
Gary Larson (University of Alaska, Fairbanks)
John MacLean (Southern Utah University)
Ursula Shepherd (University of New Mexico)

Keynote Speaker: William deBuys



The writer and conservationist William deBuys is the author of six books, which range from memoir and biography to environmental history and studies of place. A native of Maryland, he attended the University of North Carolina, where he was graduated with highest honors in 1972. Soon afterwards, the writer and social critic Robert Coles brought him to New Mexico as a research assistant, initiating deBuys's deep relationship with the cultures and landscapes of the Southwest.

DeBuys earned an MA and PhD in American Civilization from the University of Texas at Austin, finishing in 1982. He was named a Lyndhurst Fellow for 1986-1988, a Carl and Florence King Fellow at SMU in 1999-2000, and a Guggenheim Fellow in 2008-2009. Today he lives on the farm he has tended since 1976 in the remote village of El Valle in the Sangre de Cristo Mountains between Santa Fe and Taos.

William deBuys's books include *Enchantment and Exploitation: The Life and Hard Times of a New Mexico Mountain Range* (UNM Press, 1985), which won a Southwest Book Award and is now in its ninth printing; *River of Traps* (UNM Press, 1990; Trinity University Press, 2008), which was recognized as a New York Times Notable Book of the year and was one of three finalists for the Pulitzer Prize in General Non-Fiction in 1991; *Salt Dreams: Land and Water in Low-Down California* (UNM Press, 1999), which won the Western States Book Award and several other prizes; *Seeing Things Whole: the Essential John Wesley Powell* (Shearwater Press, 2001); *Valles Caldera: A Vision for New Mexico's National Preserve* (Museum of New Mexico Press, 2006), winner of a Southwest Book Award; and *The Walk* (Trinity University Press, 2007), an excerpt from which won a Pushcart Prize in 2008.

DeBuys's shorter work has appeared in *Orion*, *The New York Times Book Review*, *Doubletake*, *Story*, *Northern Lights*, *High Country News*, *Rangelands*, and other periodicals and anthologies.

DeBuys has long been active in environmental affairs. From 1982 to 1986 he directed the North Carolina Chapter of the Nature Conservancy and from the late 1980s through the 1990s he represented The Conservation Fund in the Southwest. His efforts have led to the permanent protection of over 150,000 acres of wild lands in North Carolina and the Southwest.

From 1997 to 2004 he developed and directed the Valle Grande Grass Bank, a cooperative effort involving ranchers, conservationists, and public agencies in the rehabilitation of rangelands in northern New Mexico. In 2000 the effort earned the National Range Management Award of the U. S. Forest Service. From 2001 to 2004, under appointment by President William Clinton, he served as founding chairman of the Valles Caldera Trust, which administers the 89,000-acre Valles Caldera National Preserve under an experimental approach to the management of public lands.

DeBuys is currently writing *A Great Aridness*, which examines the precariousness of life in the Southwest and the likely impact on the region of climate change, which promises to transform the Southwest as emphatically as it is already altering the Arctic.





Oral Presentation Descriptions

Friday, April 13, 2012

10:00 a.m.-11:00 a.m.

Cultural Competence and Its Importance in an Honors Program (Room A) *Juliet C. Kinkade, Saint Mary's College of California*

Cultural competence is a national movement in organizations that provide educational services, and funding sources. This presentation will focus on what cultural intentionality looks like in one Honors Program, and explore what it might look like in others, and how this leads, over time, to culturally competent Honors programs. The goal of this presentation is to imagine a future when every Honors program is representative of the ethnic, religious, and socio-economic diversity present in our institutions of higher learning.

The Future of the Internet (Room B)

Brandon Bearden, Colorado Mesa University

We have all heard about botnets, Google+, Facebook IPO, illegal downloading and China's great firewall. Where is all of this going? The information age is now. We can find information about almost anything in an instant and new free services are created daily. So, what is the future?

From Small Town Scholars to World Class Leaders: Establishing and Active Community in an Honors Freshmen Seminar (Room C)

Omar Bayomy, Jared Brickman, Jessica Cassleman, Lindsey Elhart, Laurel Graves, Devon Tokuno, Washington State University

Undergraduate research opportunities? Check. Face time with mentors who went through the Honors curriculum? Check. Building a community and improving it with volunteer work? Check. The WSU Honors UH 198 course is designed to provide incoming students with the tools to succeed at a major research university.

Dissent and Democracy: A Freshman Seminar

(Room D) *Margo Chávez-Charles, Zoe Larson, Brandi Wells, Daniel Whiteley, University of New Mexico*

Dissent and Democracy is a freshman seminar that explores the tradition of dissent from Socrates to modern times. A panel of students will talk about the scope of the class and they will explore their ideas about the connections between dissent and democracy.

Having a Blast with Honors (Room F)

Devin Ito, Paradise Valley Community College

This project is concerned with the scientific principles behind rocket mechanics. It starts with the basics, defining and describing the science involved and describes the history of rockets. This report ends with a description of the model rocket and launch system that was built as a demonstration.

Living Harry Potter: Recreating Hogwarts Through Study Abroad (Room G)


Kyle Bishop, Malori Crossley, Dana LeCheminant, Ginny Romney, Southern Utah University

In 2011, 33 students recreated experiences from the Harry Potter series as part of a two-week study abroad program. First-hand exposure to Harry's personal and educational coming-of-age journeys both enhanced and improved their ability to read the text closely and critically, making "reading" a process of life, not merely theory.

An Experiment in Integrated Learning: Baseball in American Life and Culture (Room H)

Dr. Liahna Armstrong, Alex Brown, Natasha Wood, Central Washington University

This session will look at an Honors course designed to incorporate learning from a range of disciplines into the focused topic of "Baseball in American Life and Culture." The course examines baseball as a historical, sociological, economic, scientific,



aesthetic and mythical phenomenon, both shaping and shaped by American experience.

Friday, April 13, 2012

11:15 a.m.-11:45 a.m.

An Argument Against Emotionism (Room A)

Molly Balzano, Chapman University

This presentation examines the theory of emotionism, or the idea that emotions and morality are inextricably linked. Several popular arguments in support of emotionism will be outlined so as to show why they are insufficient. A more nuanced conception of morality, that includes both emotion and reason, is proposed.

Scandinavian Crime: Echoes of the Past, Visions of the Future? (Room C)

Kim Andersen, Washington State University

It might be argued that the history of Scandinavian crime fiction goes back to the Icelandic sagas written in the 1200s. Currently, among others, the novels of Stieg Larsson, Henning Mankell, and Jo Nesbo invite us to investigate the reasons for their status as international bestsellers in script and cinema.

Arbuscular Mycorrhizal Fungi and Sunflower Symbiosis (Room D)

Jordyn Wiechens, Central Arizona College

Mycorrhizal fungi exhibit symbiotic relationships with some plants in which both organisms benefit from each other's presence. This experiment was conducted to determine the effect that this fungi has on the growth and productivity of a popular native desert plant: the sunflower.

Science, Democracy, and the Future: Importance of a Scientifically Literate Citizenry (Room F)

Prakash Chanjeri, Southern Oregon University

Science is an integral part of modern everyday life. There is no question that our lives have been enriched by its achievements, yet at the same time it has exposed us to some serious challenges. This presentation will sketch the complex but critical

relationship between science, democracy, and citizenship in the decades to come.

The Intersection of Mathematics and Communication Studies (Room G)

Tim Greene, Azusa Pacific University

Examines the history, common ground, and future of mathematics and communication studies through three questions: How has either field evolved from developments in the other? Where do the two fields theoretically and practically meet? Where could future research create new interactions between the two fields?

Edgar Degas: The Practice and Process of Painting (Room H)

Katie Berberick, Central Washington University

Edgar Degas is an artist whose engaging images of people in everyday life have left a lasting impact on viewers. I explore Degas' painting "The Absinthe Drinker" through French and art history and will also examine the formal elements of art in his paintings. Come and explore the formal, conceptual, and emotional complexities of Edgar Degas' work!

Friday, April 13, 2012

2:00 p.m.-2:30 p.m.

A Wander in the Desert Turns to Wonder (Room A)


Malissa Posyananda, Paradise Valley Community College

This original animation was created using a computer programming tool called Alice. Malissa created many objects, methods, and files in her project. The software's name and some of its features inspired her to construct a story involving the famous character from "Alice in Wonderland", who now explores a world called Desertland.

Hinduism: 1 Religion, 1 Billion Followers, 330 Million Gods (Room C)

Vijayant "VJ" Kanwar, Central Arizona College

With over a billion followers, Hinduism is the oldest and the third largest religion in the world. It



is a conglomeration of religious, philosophical, and cultural ideas and practices that originated in India about 4000 years ago. An exciting exploration of the origin, beliefs, sacred scriptures, and festivals awaits you.

Cultural Expectations of Masculinity (Room D)

Julie Ackley, Colorado Mesa University

Cultural expectations of masculinity contribute to identity formation. For African American men, already marginalized, to claim status in the homosexual culture involves many internal and external obstacles. Of these who are married, with families, some choose not to address their lifestyle choices, living a public heterosexual life and private homosexual life.

Unfolding a Thesis: Turning Today's Lab Technique into Tomorrow's National Conference (Room F)

Omar Bayomy, Washington State University

How does one connect 1) traveling around the world and writing short stories at each place you stop, 2) discovering the role of a newly-discovered sleep-regulatory protein, and 3) discovering the proper foot stance to have while playing the trumpet? The Washington State University Honors College Thesis Requirement.

Hard Times in the Big Easy: The Yellow Fever Epidemic of 1853 (Room G)

Molly Iker, Chapman University

From May to October 1853, New Orleans, Louisiana, battled a terrifying yellow fever epidemic. This presentation examines the death toll as the epidemic continued, and the reactions to the epidemic, as well as the political, medical, and social effects of this particular epidemic.

Teaching to Learn (Room H)

Michaela Rode, University of New Mexico

Teaching to learn will focus on how the act of preparing to teach and teaching enable a person to understand the material. It is not enough for someone to understand the material, they need to

be able to make it understandable to others a lesson I learned from student teaching.

Friday, April 13, 2012

2:45 p.m.-3:15 p.m.

New Legacy: A Fresh Start on an Ancient Planet

(Room A) *Sean Fossgreen, Cochise College*

2125: Earth has fallen. Where the vibrant nations of the early 21st century once stood, only despots and fragments of democracy remain. A group of trillionaire philanthropists fund a desperate project on Mars. The tattered remains of humanity's once-bright future now depend on the brave settlers of New Legacy.

"Where Words Fail, Music Speaks": The Experience of Adapting Literature to Music

(Room B) *Laney Fowle, Southern Utah University*

This study endeavors to expand adaptation discourse to the modal transformation of literary works to music. The resulting personal attempt at adaptation of a poem to an accompanied vocal composition was accomplished by the investigation and subsequent practical application of adaptive theory presented in several documents on the processes involved in adaptation.

Our Energy Future Starts Today: One Person/One Family Making a Difference (Room C)

Nicolas Martinez, University of Wyoming


The topic overlooking the future of energy demands and available resources is one of great debate, concern, and uncertainty for people around the globe. Targeting the effectiveness of how we consume and save energy in our home could be part of the answer to reduce increasing demands. A "greener" approach would increase efficiency, save money, and reduce negative effects (carbon footprint) placed on the environment.

The Road to Gettysburg (Room D)

E. Andrew Kobylarz, Colorado Mesa University

July 1-3, 1863 was arguably the most critical time during the American Civil War. The events which





led the North and South to clash at Gettysburg during the summer of 1863 was decided well before the first bullets began to fly. Through an interactive presentation and pieces from an academic paper on this subject it will be explained why events like the Battle at Brandy Station or the marches both armies made leading up to the battle made such a critical difference in the outcome of the encounter at Gettysburg.

Colony Collapse in Honeybees (Room F)

Ursula DeStefano, Flathead Valley Community College
Colony collapse disorder is a recent phenomenon that is characterized by the sudden disappearance of entire colonies of honeybees. Mites, parasites, and viruses all account for bee deaths, but the underlying problem is a weakened immune system. While scientists search for the cause of this weakened immune system, we grow ever closer to the dire economic and ecological consequences that will result from continued colony loss.

Occupy Wall Street or Tea Party Rally: Where Would Jesus be in Contemporary American Politics? (Room G)

Ania Hodges, Chapman University
Religious affiliation plays a vital role in shaping citizens' policy preferences. With our country's Christian majority, knowing what Jesus' political positions could be is important. This research asks: are his views (inferred from the Bible) consistent with the political words and deeds of those who currently claim to follow him?

Reaching Out from the Ivory Tower: How to Form an Effective External Advisory Committee (Room H)

Dr. Matthew Altman, Central Washington University
In this presentation, I will explain how to form an effective external advisory committee. I will conclude by leading a discussion regarding the roles such advisory boards should and should not play in honors education.

Friday, April 13, 2012

3:30 p.m.-4:00 p.m.

Zombies, Bad Robots, and Leprosy: How the Uncanny Valley Shapes Thought (Room A)

Nicole Connolly, Chapman University
Racism, distrust of technology, and digitally created movies all have a common root in the uncanny valley: the feeling of revulsion that occurs when one encounters something humanlike, but not completely human. My presentation will show thinking on this topic across the fields of anthropology, psychology, and evolutionary biology.

The Great Usurper: On Moral Nihilism's Threat to America (Room B)


Matthew Baird, Central Washington University
Is moral nihilism a threat to American culture? Key nihilist literature is used to demonstrate the radicalism of the philosophy. After this I analyze the present danger moral nihilism poses to America. I do this by citing Justice Scalia's fears concerning the erosion of federal constitutionalism and some legal cases.

Private Correctional Facilities: Do they make us safer, or are they simply the capitalist's dream? (Room C)

Nichole Campbell, Daniel Robinson, Central Arizona College
This research project compares the operations of private and government correctional facilities. This project explores two key aspects, economics and safety, to determine whether private correctional facilities are superior to government facilities. The history of escaped inmates and riots inside private facilities leave the safety concerns outweighing potential financial gains.

Organized Crime and its Effects (Room D)

Scott Barks, Colorado Mesa University
Organized criminal activity goes beyond traditional crime through the formation of crime syndicates with a structured hierarchy. This presentation will analyze how organized crime impacts societies



throughout the world, stretching across both national and even international boundaries in its conquest to monopolize various industries. Emphasis will be placed on the law perspective, comparisons made between how enforcement currently curtails organized crime, and whether or not these policies are stringent enough to stop one of the most dangerous social problems in the world today.

Physiological Arousal and Adolescent Aggression (Room F)

Yvonne Clark, Westminster College

Adolescent violence is of great concern to society but is difficult to measure. Aggression is often coded in place of violence and is used to infer violent tendencies, hinging on physiological arousal to lead to aggression. The current research investigated the relationship between physiologically arousing activities and aggression in adolescents.

Thinking Outside the Box: Designing Collaborative Learning Projects (Room G)

Dr. Ruth Meredith, University of New Mexico

In this presentation I will describe how I have designed several different collaborative learning projects which I have used in my Honors courses. I will cover such basics as how to prepare students to move outside their comfort zone, write instructions, assign groups and evaluate the results.

Three Views of a Woman: Using Hatshepsut as a Lens Through Which to Examine Gender (Room H)

Jesse Hegstrom Oakey, Central Washington University

Hatshepsut, Pharaoh of Egypt about 3500 years ago, is remembered today mostly because she was a woman. This presentation will compare the attitudes of early archeologists, ancient Egyptians, and contemporary historians to examine Hatshepsut's story and compare three different cultures' views on gender.

Friday, April 13, 2012

4:15 p.m.-4:45 p.m.

Star Trek: Adventures Through Space and Equality (Room A)

Brittni Evans, Central Arizona College

The social messages within the original 1960's Star Trek series encompass subjects ranging from the civil rights movement to the cold war. The groundbreaking sociological events of the time, often emulated through entertainment media, informed day-to-day life. This research revealed that these messages resonated with viewers of the series.

Foreign Aid: A Helpful or Harmful Practice?

(Room C) *Matt Cherry, Azusa Pacific University*

Governments give out billions of dollars annually to other developing countries in the form of foreign aid. Recently, several authors and academics have raised the question, "Is foreign aid doing more harm than good?" This question, along with the current state of foreign aid, will be considered and discussed.

Space: The Final Frontier (Room D)

Calvin Martin, Ahmad Muhammad, South Mountain Community College

This presentation will be on space colonization. In their session they will explore how space-dwellers could use unlimited solar-power, raw material and microgravity [of other planets] in creative ways and create products that are not possible on Earth.

The Effect of a Primed Social Goal on Social Prospective Memory Accessibility and Performance (Room F)

Anna Fahlsing, University of Wyoming

We examined whether priming a social goal ("helping") increases the accessibility and performance of social prospective memory tasks. Results showed a nonsignificant trend for better social remembering in the socially primed group. Also, for females, social priming significantly increased the accessibility of social tasks (tasks that affect others) in memory.

It Started with a Mouse, but Ended with a Sequel: How Disney 'Fights Back' in a Plummeting Economy (Room G) *Jacqueline Hudspeth, Brandon Tracey, Chapman University*

No new licensing. No new products. Same characters. Just a new story for a new generation. Join us as we discover the "sequel phenomenon" of the Disney/Pixar Company, as it attempts to right the wrongs of its classic films, while performing lucrative business in a plummeting economic environment.

The Myths of Baseball's Past, and the Predictions for the Future (Room H)

Cody Taylor, Central Washington University

Are you someone who enjoys America's favorite pastime? Have you ever wondered how baseball started and where it could possibly go? I will be talking about baseball's past and some events that happened during its 173 years of existence, and I will make some predictions about the possible future of baseball.

Friday, April 13, 2012

5:00 p.m.-5:30 p.m.

Capturing the Raven: The Process of Composing and Recording a Film Score (Room A)

Michael Wager, Southern Utah University

Music has always been an essential part of film. In the process of composing and recording the score of a student-made film adaptation of "The Raven" by Edgar Allen Poe, I used leitmotifs, silence, tension, and so on, creating a soundtrack that effectively accompanied the retelling of this well-known poem.

Turning Oppression into Success: How the English Restoration Actress Achieved Poetic Justice (Room B)

Reesa Nelson, Central Washington University

In this presentation, I will explore how Restoration England's theatre scene changed radically when Charles II allowed women to

perform onstage. Despite being pigeonholed into limited, stereotypical roles written by men, newly empowered actresses were still able to earn prestige and wealth through successful careers in the theatre.

A Comparison of Ancient and Modern Tattoo Significance (Room C)

K. Pixi Freeman, Mesa Community College

Exploring personal meanings behind modern people's tattoos, this research paper uses that information to explain possible reasons behind ancient tattooing. Using archaeological literature on mummified tattooed skin from across the world and interviews from some of today's tattooed people in Arizona, a comparison is presented along with a PowerPoint slideshow.

Aphrodite, Hera, and Athena: Goddesses as Women in Art (Room F)

Phoebe Gildea, Chapman University

How did your favorite myths fit into everyday ancient Greek life? How could an intensely patriarchal culture worship powerful goddesses? Come find out! I use the famous Judgment of Paris myth to examine myth, religion, and art in ancient Greece and how they all connect in ancient Greek daily life.

Recruiting the Future (Room G)

Jared Brickman, Lindsey Elhart, Libby Walker, Washington State University

Holding human brains? Investigating apple theft? Comparing bundt cake to rock formations? That's just summer camp at the Washington State University Honors College for 30 high school juniors. Discover how current honors students as counselors and renowned faculty as presenters made a summer truly excellent.

Saturday, April 14, 2012

8:30 a.m.-9:00 a.m.

The Culture of Death in the Western World (Fireplace Room)

Richard Wysocki, Chapman University

This presentation discusses the West's relationship with death throughout history. Drawing on Ernest Becker, Phillip Ariés, and various pieces of classic Western literature, the presentation will show that prevalent attitudes towards death are in some way a prescription of our existence.

Never Too Old: Reading Aloud to Secondary Students Has a Positive Effect on Developing and Maintaining Their Literacy Skills (Room A)

Alyson M. Savage, Central Washington University
Studies have shown that literacy rates are low among secondary students. I will show that the exposure of older students to varied and well-planned read-aloud strategies has a positive effect on developing and maintaining strong literacy skills. I will also discuss methods that educators can use to implement these strategies.

Speaking Through Color: How Color Choices in Artwork Enhance the Ability of a Piece to Communicate to the Viewer (Room B)

Michelle Schlunga, Central Washington University
How is it that color, something often taken for granted, affects how we feel? Even though it is intangible, it has an undeniable influence on human emotions. Learn how artists, particularly graphic designers, take this fact and use it to their advantage to communicate ideas in their work through colors.

The Role of the United Nations: A Case Study of Palestine (Room F) *Melanie Daugherty, William LaRivee, United States Air Force Academy*

The Palestinian bid for membership to the United Nations calls attention to the organization's global influence and the extent of its authority as an international forum. Interviews with top UN staffers help assess the UN's struggle to find an appropriate role in twenty-first century conflict mediation.

IS-LM and Its Alternatives' Implications on Monetary Policy (Room G)

Qui Pham, Orange Coast College

A presentation examining the relationships of the investment saving and liquidity preference money supply (IS-LM) model and its more accurate, complex alternatives with the aggregate demand and aggregate supply (AD-AS) model and thus expressing their implication on the effect and limits of monetary policy through interest rate behavior.

"Shh...I am eavesdropping on our future" (Room H)

Kevin Sherman, Jennie Sims, University of Colorado
Get an in-depth and personal look at the minds and lives of honors students outside of the classroom setting. See how students actively apply their honors mentalities, principles, disciplines and ethics to what will really matter in the end – the real world.

Saturday, April 14, 2012

9:15 a.m.-9:45 a.m.

Conexiones UNM, Using Ethnographic Methods with Undergraduate Students in International Programs (Fireplace Room)

Dr. Michael Thomas, Margo Chávez-Charles, Jessica Northam-Muñoz, University of New Mexico

Americans are often at a loss as to how to connect with others across cultural boundaries in international settings. Programs at the University of New Mexico show that ethnographic field research methods can be adapted for students to use to explore and engage the host society and culture.

Service Learning Action Research (Room A)

Dr. Dawn Stracener, University of New Mexico

Dr. Stracener will present on how Service Learning Action Research projects can become an important capstone senior seminar so Honors students can learn to create social justice in their communities. This interactive presentation will include student voice and work, and curriculum so you can develop your own Service Learning Action Research seminar.



Risking Failure: Developing Resiliency as a Core Value of Honors (Room B)

Heather Thiessen-Reily, Gavin Thompson, Western State College of Colorado

What happens when you put a group of Honors students in charge of a class based on a mutually selected topic? Not what you might expect. Hear how this course helps our Honors students develop intellectual and personal resiliency and why our Honors Program believes that growth is so important.

Mobile Game Design in Honors (Room C)

Dr. Chris Holden, University of New Mexico

This session will introduce the concept of a mobile game design studio classroom, the open-source software we use to allow non-programmers to create (ARIS), and share stories of success and failure of this experiment within our honors community over the last two years.

Imagining Scribendi's Future: Possibilities Beyond the Stars in the Western Region

(Room F) *Dr. Leslie Donovan, University of New Mexico*

Scribendi is a high quality, annual publication of art and literature sponsored by WRHC. This presentation, led by *Scribendi's* faculty advisor, will discuss possibilities for the future that might allow the magazine and its staff to benefit even more WRHC students, faculty, and administrators.

"La Llorona" Influences in the Community

(Room G) *Miguelina Meireles, Paradise Valley Community College*

La Llorona is a folktale told in different languages throughout many generations. As ancient cultures wrestle with embracing new technologies, *La Llorona* and similar stories reinforce historical and cultural values. Miguelina Meireles will demonstrate storytelling and interpret this famous folktale.

Solution to the Obscene: A Discussion on Solving the Plastic Waste Crisis (Room H)

Angela Fioretti, Western State College

This study constructed a model materials cycle for closing the loop on plastic waste by synthesizing the most effective zero waste strategies utilized around the globe. The goal of this study was to demonstrate the feasibility of closing the plastic waste loop in industrialized countries, such as the United States.

Saturday, April 14, 2012

10:30 a.m.-11:00 a.m.

Domestic Violence and the Healing Church

(Fireplace Room) *Crystal Keele, Central Arizona College*

Domestic violence can leave wounds much deeper than the surface of the skin, wounds that can be found in the very heart of women and their children. The Church is effective in ministering to these wounds of hurt, disappointment, and rejection, so that the healing process can begin.

Not Just an Event (Room A) *Maureen Owen, Metropolitan State College of Denver*

This study examines far-reaching effects of event hosting on academic programs, through the case study of a Metro State College of Denver music event. To illuminate the extended scope that a single event can have, this paper analyzes the multitude of effects, anticipated and not, that this particular event has achieved.

Reconsidering the Characteristic of Strength in the Gothic Romance Heroine (Room B)

Sarah Nassif, Central Washington University

Has a shift in feminine values forever alienated the modern-day reader from the heroine of the gothic romance novel? I venture to say no. Through the application of an internal-motivation model of strength, I will contextualize the gothic heroine in today's world and rescue her from the threat of irrelevance.

Heroism, Hardships, and Hallelujahs (Room C)



Antoinette Pike, Cochise College

Through remarkable stories of struggle and triumph, my grandfather has taught me about himself, my family, and myself. After listening to oral accounts and carefully collecting historical information, I have crafted a biographical narrative for future family generations. A journey such as this should be shared, cherished, and passed on.

Discovering the Weird: The Influence of an Unknown Genre (Room G)

Violet Wager, Southern Utah University

The Weird, or strange happening in the everyday, is an overlooked literary genre, and is often labeled Gothic, fantasy, science-fiction, or horror. Though containing elements of other genres, Weird Fiction is distinctly its own. A timeline and explanation of this silent genre creates higher understanding for formerly misfit literary works.

The NAU G.U.R.U.S.: Improving the First Year Experience (Room H)

Katie Sheridan, Ryan Monahan, Kristen Hughes, Rachel Young, Northern Arizona University

The Guides to University Retention and Undergraduate Success (G.U.R.U.S.) Program provides upper-class Honors students with peer mentoring and community leadership opportunities through mentors' engagement with first-year students and faculty in HON 190, a required seminar in critical reading and writing, thereby improving student and faculty achievements in this class.

Saturday, April 14, 2012

11:15 a.m.-11:45 a.m.

**"War: An Abomination by Man, or an Illness"
An Existential Analysis of Les Chemins De La Liberté** (Fireplace Room)

Elizabeth Berrigan, Chapman University

Sartre uses the natural flow of human consciousness and actions to depict worldwide tension in the time period centered around World War II. This presentation will analyze his representation of

the war, including commonalities in the human condition, the causes of war, and the role that individual as well as societal wills played in determining the occurrence of war.

**Trichloroethylene, the Silent Massacre Part II:
Creating a Bill** (Room A)

Terri L. Pace, Central Washington University

Trichloroethylene is a solvent proven to be carcinogenic. It causes many types of cancer and medical problems. Laws surrounding this toxin do not help the millions of victims. State statutes of limitations stand in the way. However, by showing that such statutes are unconstitutional, it might be possible to change current laws.

The Tenacity of Creation in Semi-Autobiography (Room C)

Timothy Morrise, Southern Utah University

Barthes' "Death of the Author" teaches that the author has no authority in analyzing literature. But what about semi-autobiography? This presentation discusses Joyce's *Portrait of the Artist as a Young Man* and Fellini's *8½*, and how such works complicate dismissing the author when a work's content is based upon creation.

The Adobe Project: Experiential Learning One Brick at a Time (Room G)

Shane Kula, Dr. Darien Ripple, Chandler-Gilbert Community College

Shane Kula, a CGCC Honor Student, and Dr. Darien Ripple, Philosophy Faculty, will share their experiences gained through using experiential learning as a tool for engaging students in sustainable behavior. This is done through their campus's Environmental Technology Center, a two acre, outdoor, living classroom.



Poster Presentation Descriptions

1

Jornada del Curanderismo: The Art of Folk Healing in New Mexico, Its Origin, and Its Intricacies

Tristen Ashly Adams, University of New Mexico

Folk healing is such an important part of New Mexican culture, traditions, and history. An exploration in New Mexico will be conducted on the various areas of folk healing (curanderismo), how folk healing has been used, and the main aspects discussed among scholars today regarding curanderismo.

2

Morera's Theorem and Hyperfunctions in a Hyperbolic Setting

Kristin Blacklock, Chapman University

This presentation examines the theory of emotionism, or the idea that emotions and morality are inextricably linked. Several popular arguments in support of emotionism will be outlined so as to show why they are insufficient. A more nuanced conception of morality, that includes both emotion and reason, is proposed.

3

Role of Neurokinin 3 Receptor in Hypertension in Salt Sensitive Dahl Rats

Cayleigh Brown, University of Wyoming

The neurokinin 3 receptor is colocalized with vasopressin (VP) neurons in the PVN and NK3R agonists stimulate VP release. NK3Rs are activated by hyperosmolarity. The Dahl rat model develops hypertension on a high salt diet; has increased levels of VP in the blood, PVN, and SON; and increased expression of NK3R.

4

Rabies on the Last Frontier: A Phylogeographical Look at Red (*Vulpis vulpis*) and Arctic Fox (*Vulpus lagopus*) with Respect to Mitochondrial DNA and the Spatial Diffusion of Rabies

Christopher James Clement, University of Alaska Fairbanks

Red foxes in Alaska seem to not maintain the rabies virus as well as Arctic foxes, but are known carriers of the virus. This may be due to biological and geological restrictions, and potentially migration and population patterns. This is important as global warming pushes red fox populations farther north.

5

Natural Disasters and the Media: Past, Present, and Future

Shannon Doty, Southern Utah University

This project compares the 1906 San Francisco fire and the 2011 Japanese tsunami, and the media contribution in each case. It explores the role that the media plays in informing citizens about natural disasters, motives they have in doing so, and how situations can be better handled in the future.

6

Stuck in the Alamo

Keith Funkhouser, Chapman University

The Alamo, through the lens of tourism, helps identify the competing idealistic, nostalgic, and masculine aspects of the American identity, which is reinforced at the site, but not necessarily reflective of a true American history and culture. Therefore, is tourism beneficial or insensitive to our national identity?

7

Phylogenetic Identification of Petroleum-Degrading Bacteria in Alaskan Willow Soils

Julie Hagelin, University of Alaska Fairbanks

Plants positively impact soil microbial activity and may be utilized to stimulate contaminant biodegradation. Stable isotope-labeled petroleum compounds were degraded and incorporated by bacteria in unplanted and willow-planted soils, which displayed different bacterial community profiles. Pyrosequencing is underway to provide higher-resolution community profiles and illuminate how willow influences community structure.

8

The Bystander Effect

Zack Halvorson, Rochelle Lewis, Estrella Mountain Community College

The Bystander Effect: A look into the effects large crowds have on a person in need. Oftentimes, when a person is in need of assistance while in proximity to a large group of bystanders, they are less likely to receive the help they require.

9

The Effects of Manipulating the Unconscious Mind

Eric Herrera, Alejandra Davila, Estrella Mountain Community College

We conducted this research to comprehend the study of manipulation and obedience. In manipulation the researchers informed the participants that all of the socks were different then structurally showed the socks to the participants; in obedience the researchers pushed the participants to pick the brightest and or the softest sock.

10

Involvement of Neurokinin 3 Receptor (NK3R) in Embryonic Development and Chemotaxis

Eli Kinney-Lang, University of Wyoming

During embryonic development, neurons migrate to their target locations in the brain by following chemical cues in the extracellular environment through a process called chemotaxis. A specific neuroreceptor, neurokinin 3 receptor, may play a pivotal role in this chemotactic development and the wiring of the brain.

11

Death as a Living Monument: Bobby, the KiMo Ghost Boy

Andrea Nanez, Rachael Mnuik, University of New Mexico

A study of the memorial created for "Bobby the Ghost Boy" at the KiMo Theater in downtown Albuquerque, New Mexico. Bobby was a real boy killed by a boiler explosion in the theater in 1951. Over the years different memorials have developed for him at the theater as well as stories about his presence as a ghost. This has led to cast and crew members undertaking elaborate rituals centered on leaving offerings for Bobby as a way of assuring successful performances. The study examines how the memorials to Bobby have changed over the years and how the concepts of memory and memorial adapt, change and persist.

12

Memories and Tragedies: A Closer Look at the Memorials to TWA Flight 260

Sydney Hutson, University of New Mexico

a study of two memorials created in honor of the victims of TWA Flight 260, an airliner that crashed into the Sandia Mountains to the east of Albuquerque, New Mexico in 1955. It compares a memorial built at the crash site in the rugged--accessible only by a long hike through the Wilderness--canyons below the Tram to a more recent memorial placed at the Sunport (Albuquerque's international airport). It explores

Page 25

WRHC 2012 - Between Earth and Sky: Imagining the Future - Albuquerque, NM





the effectiveness of each in reaching and communicating with visitors at both a physical and emotional level.

13

Generating Highly Symmetric Pseudoline Arrangements Using the Kaleidoscopic Beam Technique

Samantha MacNeith, University of Alaska Fairbanks

An arrangement of pseudolines is a collection of simple closed curves in the extended Euclidean plane such that each differs from a line only in a finite region and each pair intersects exactly once. This project presents highly symmetric pseudoline arrangements and generalizes their constructions using a kaleidoscopic beam technique.

14

Engaging with our Future: Reaching Out to Accelerated Youth

Elizabeth Pannel, Southern Oregon University

Southern Oregon University's Honors Club demonstrates how reaching out to accelerated and academically focused youth in their community has made an impact. Through a poster presentation, they emphasize the importance of college honors students being a positive influence in a young person's academic career.

15

The United Nations: A Study of Multi-Polar Global Power

Eric Poland, U.S. Air Force Academy

How can a case study of the UN inform our understanding of the multi-polar global environment? Have recent events in Libya defined the UN and its Security Council as an international organization?

16

Body Size and Climate Change in Alaska's Red Squirrels

Catherine E. Rubin, University of Alaska Fairbanks

This study seeks to determine if the body size of red squirrels has changed over the last 60 years in the Fairbanks area as a possible response to climate change. Gaining an understanding of patterns of ecogeographic variation in a changing climate is the ultimate goal of my research.

17

The Rio Grande Rift, Rio Grande River, and Albuquerque Aquifer

Lauren Salvato, University of New Mexico

The purpose of this research is to provide a concise review of researchers' current understanding of and questions about the formation of the Rio Grande Rift and the Rio Grande River with a focus on the central section of the rift. The development of the rift is of particular importance to the city of Albuquerque because this section contains the Albuquerque Aquifer. An understanding of the connections between these geological formations is central to our ability to predict the availability of water in the future and demonstrates the significance of these geological features to the state of New Mexico.

18

Extinction of Pleistocene Megafauna in New Mexico

Michelle Sandine, University of New Mexico

We have all heard about botnets, Google+, Facebook IPO, illegal downloading and China's great firewall. Where is all of this going? The information age is now. We can find information about almost anything in an instant and new free services are created daily. So, what is the future?

19

Attitudes, Knowledge, and Beliefs on Cancer and its Prevention in Northwestern Rural Alaska

Jenna Schmidt, University of Alaska Fairbanks

This report consists of the results of a survey on knowledge and perspectives of Northwestern rural Alaskans on cancer and its prevention. Participants were questioned on general information, as well as four different types of cancer.

20

Preventing the Invasion of Mussels in Montana Waters

Kyle Selhost, Flathead Valley Community College

This is an ecological and economic study of zebra and quagga mussels that are threatening to invade pristine Montana waters. A three-part solution is recommended in order to control the invasion.

21

The Effects of Water Fluctuation and Temperature Change on Growth in Amphibian Larvae

Katrina Slabaugh, Southern Utah University

The recent rapid changes in climate have the potential to affect many species, including amphibians. Projected changes in climate include regional changes in temperature and precipitation. To understand the potential effects of these projected changes, we are studying the growth rates of amphibian larvae in experimental temperatures and hydroperiods.

22

Comparison of Symbiodinium Communities within Marginopona Vertebalis Substrates and the Surrounding Water

Elizabeth Stone, University of New Mexico

We are looking at the endosymbiotic relationship between a species of soritid foraminifera, *Marginopora vertebalis*, and a dinoflagellate algae *Symbiodinium*. In order to do this we are using pyrosequencing and quantitative PCR to discover what clades *Symbiodinium* are found in *M. verebralis* and its surroundings.

23

Identifying Raphé Respiratory Chemosensory Amplifiers in Situ

Hannah Tallen, University of Alaska Fairbanks

We hypothesize that chemosensitivity of medullary “raphé chemosensory amplifier” (RCA) interneurons is due to intra-network input from serotonin synthesizing and γ -aminobutyric acid (GABA) synthesizing neurons. Results of extracellular recording of individual rat raphé neurons in situ support our model that RCA interneuron activity is mediated by serotonergic and GABAergic inputs.

24

Visual Manipulation: An Examination of How Photography and Graphic Design Distort Our Perceptions

Cristiana Wilcoxon, Chapman University

This display depicts the current tools used by photographers and graphic designers to manipulate the perception of viewers in the fields of advertising and publication. It explores the psychology of perception, the science of optics, and the ethical concerns of distributing misleading visual media to the public.





Participating Institutions

(Listed in alphabetical order.)

Azusa Pacific University
California State University, Fullerton
Central Arizona College
Central Washington University
Chandler-Gilbert Community College
Chapman University
Cochise College
Colorado Mesa University
Estrella Mountain Community College
Flathead Valley Community College
Mesa Community College
Metropolitan State College of Denver
Northern Arizona University
Orange Coast College
Paradise Valley Community College
Saint Mary's College of California
South Mountain Community College
Southern Oregon University
Southern Utah University
United States Air Force Academy
University of Alaska Fairbanks
University of Colorado
University of New Mexico
University of Wyoming
Washington State University College
Western State College of Colorado
Westminster College

Index of Speakers and Presenters

Abdallah, Dr. Chaouki, University of New Mexico	Page 3, 8, 13
Ackley, Julie, Colorado Mesa University	Page 17
Adams, Tristen, University of New Mexico	Page 24
Altman, Dr. Matthew, Central Washington University	Page 18
Alvarez, Sophia, University of New Mexico	Page 3
Andersen, Kim, Washington State University	Page 3, 13, 16
Armstrong, Dr. Liahna, Central Washington University	Page 15
Baird, Matthew, Central Washington University	Page 18
Balzano, Molly, Chapman University	Page 16
Barks, Scott, Colorado Mesa University	Page 18
Bayomy, Omar, Washington State University	Page 15, 17
Bearden, Brandon, Colorado Mesa University	Page 15
Berberick, Katie, Central Washington University	Page 16
Berrigan, Elizabeth, Chapman University	Page 23
Bishop, Kyle, Southern Utah University	Page 15
Blacklock, Kristin, Chapman University	Page 24
Boyko, Alisa, San Diego Mesa College	Page 13
Brickman, Jared, Washington State University	Page 15, 20
Brown, Alex, Central Washington University	Page 15
Brown, Cayleigh, University of Wyoming	Page 24
Campbell, Nichole, Daniel Robinson, Central Arizona College	Page 18
Cassleman, Jessica, Washington State University	Page 15
Chanjeri, Prakash, Southern Oregon University	Page 16
Chávez-Charles, Margo, University of New Mexico	Page 15, 21
Cherry, Matt, Azusa Pacific University	Page 19
Cites, Jeremy, Paradise Valley Community College	Page 13
Clark, Lee, University of New Mexico	Page 3
Clark, Yvonne, Westminster College	Page 19
Clement, Christopher, University of Alaska Fairbanks	Page 24
Connolly, Nicole, Chapman University	Page 18
Crossley, Malori, Southern Utah University	Page 15
Daugherty, Melanie, United States Air Force Academy	Page 21
Davila, Alejandra, Estrella Mountain Community College	Page 25
deBuys, William	Page 3, 14
DeStefano, Ursula, Flathead Valley Community College	Page 18
Donovan, Dr. Leslie, University of New Mexico	Page 22
Doty, Shannon, Southern Utah University	Page 24
Dougher, Dr. Michael, University of New Mexico	Page 3, 8, 13
Elhart, Lindsey, Washington State University	Page 15, 20
Evans, Brittini, Central Arizona College	Page 19
Fahlsing, Anna, University of Wyoming	Page 19
Feldstein-Ewing, Dr. Sarah, University of New Mexico	Page 3, 13
Fernandez, Monica, University of California, Irvine	Page 13
Fioretti, Angela, Western State College	Page 22



Flying Earth, Duta, Native American Community Academy	Page 12
Fossgreen, Sean, Cochise College	Page 17
Fowle, Laney, Southern Utah University	Page 17
Freeman, K. Pixi, Mesa Community College	Page 20
Funkhouser, Keith, Chapman University	Page 24
Gildea, Phoebe, Chapman University	Page 20
Gilliam, Danielle, University of New Mexico	Page 3
Graves, Laurel, Washington State University	Page 15
Greene, Tim, Azusa Pacific University	Page 16
Hagelin, Julie, University of Alaska Fairbanks	Page 25
Halvorson, Zack, Estrella Mountain Community College	Page 25
Hegstrom Oakey, Jesse, Central Washington University	Page 19
Herrera, Eric, Estrella Mountain Community College	Page 25
Hodges, Ania, Chapman University	Page 18
Holden, Dr. Chris, University of New Mexico	Page 22
Hudspeth, Jacqueline, Chapman University	Page 20
Hughes, Kristen, Northern Arizona University	Page 23
Hutson, Sydney, University of New Mexico	Page 25
Iker, Molly, Chapman University	Page 17
Ito, Devin, Paradise Valley Community College	Page 15
Kanwar, Vijayant, Central Arizona College	Page 16
Keele, Crystal, Central Arizona College	Page 22
Kinkade, Juliet, Saint Mary's College of California	Page 15
Kinney-Lang, Eli, University of Wyoming	Page 25
Kobylarz, E. Andrew, Colorado Mesa University	Page 18
Kottler, Jona, University of New Mexico	Page 3
Kula, Shane, Chandler-Gilbert Community College	Page 23
LaRivee, William, United States Air Force Academy	Page 21
LaRoche, Kendell, Metro State College of Denver	Page 13
Larsen, Gary, University of Alaska	Page 3, 13
Larson, Zoe, University of New Mexico	Page 15
LeCheminant, Dana, Southern Utah University	Page 15
Lewis, Rochelle, Estrella Mountain Community College	Page 25
Lovata, Dr. Troy, University of New Mexico	Page 11
MacLean, John, Southern Utah University	Page 3, 13
MacNeith, Samantha, University of Alaska Fairbanks	Page 26
Martin, Calvin, South Mountain Community College	Page 19
Martinez, Nicolas, University of Wyoming	Page 17
Martin-Keka, Marc, Native American Community Academy	Page 12
Meireles, Miguelina, Paradise Valley Community College	Page 22
Meredith, Dr. Ruth, University of New Mexico	Page 19
Mikeson, Claire, University of Montana-Missoula	Page 13
Mnuk, Rachael, University of New Mexico	Page 25
Monahan, Ryan, Northern Arizona University	Page 23
Morrise, Timothy, Southern Utah University	Page 23
Muhammad, Ahmad, South Mountain Community College	Page 19
Nanez, Andrea, University of New Mexico	Page 25
Nassif, Sarah, Central Washington University	Page 22



Nelson, Reesa, Central Washington University	Page 20
Northam-Muñoz, Jessica, University of New Mexico	Page 21
Otero, Dr. Rosalie, University of New Mexico	Page 3
Owen, Maureen, Metropolitan State College of Denver	Page 22
Pace, Terri, Central Washington University	Page 23
Pannel, Elizabeth, Southern Oregon University	Page 26
Pham, Qui, Orange Coast College	Page 21
Pike, Antoinette, Cochise College	Page 22
Poland, Eric, U.S. Air Force Academy	Page 26
Posyananda, Malissa, Paradise Valley Community College	Page 16
Ripple, Dr. Darien, Chandler-Gilbert Community College	Page 23
Rode, Michaela, University of New Mexico	Page 17
Romney, Ginny, Southern Utah University	Page 15
Rubin, Catherine, University of Alaska Fairbanks	Page 26
Salvato, Lauren, University of New Mexico	Page 26
Sandine, Michelle, University of New Mexico	Page 26
Savage, Alyson, Central Washington University	Page 21
Schlonga, Michelle, Central Washington University	Page 21
Schmidt, Jenna, University of Alaska Fairbanks	Page 27
Selhost, Kyle, Flathead Valley Community College	Page 27
Shepherd, Dr. Ursula, University of New Mexico	Page 3, 8, 13
Sheridan, Katie, Northern Arizona University	Page 23
Sherman, Kevin, University of Colorado	Page 21
Sims, Jennie, University of Colorado	Page 21
Slabaugh, Katrina, Southern Utah University	Page 27
Sroges, Molly, University of New Mexico	Page 13
Stone, Elizabeth, University of New Mexico	Page 27
Stracener, Dr. Dawn, University of New Mexico	Page 21
Tallen, Hannah, University of Alaska Fairbanks	Page 27
Taylor, Cody, Central Washington University	Page 20
Taylor, Shari, University of New Mexico	Page 3
Thiessen-Reily, Heather, Western State College of Colorado	Page 22
Thomas, Dr. Michael, University of New Mexico	Page 21
Thompson, Gavin, Western State College of Colorado	Page 22
Tokuno, Devon, Washington State University	Page 15
Tracey, Brandon, Chapman University	Page 20
Wager, Michael, Southern Utah University	Page 20
Wager, Violet, Southern Utah University	Page 23
Walker, Libby, Washington State University College	Page 20
Wells, Brandi, University of New Mexico	Page 15
Whiteley, Daniel, University of New Mexico	Page 15
Wiechens, Jordyn, Central Arizona College	Page 16
Wilcoxon, Cristiana, Chapman University	Page 27
Winegar-Garrett, Chloë, University of New Mexico	Page 3
Wood, Natasha, Central Washington University	Page 15
Wysocki, Richard, Chapman University	Page 21
Young, Rachel, Northern Arizona University	Page 23



[illegible]

[illegible]

[illegible]

[illegible]



University Honors Program

MCS06 3890
Building 73, Room 21
Albuquerque, NM 87131
505.277.4211
honors@unm.edu
<http://honors.unm.edu>